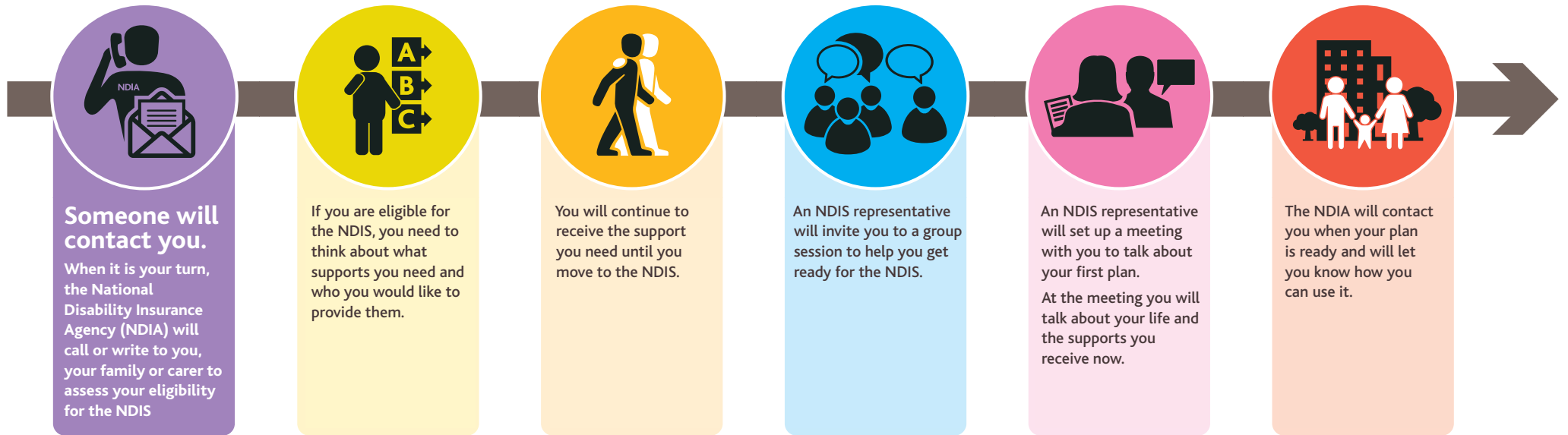


# How will I access the National Disability Insurance Scheme (NDIS)?



This pathway is for people who receive disability support from the NSW Government now.



Remember, this is your first plan, so you can review it later on.



## WHERE CAN I GET MORE INFORMATION?

Learn more about the NDIS in NSW and check when it is available in your area at [www.ndis.nsw.gov.au](http://www.ndis.nsw.gov.au).  
Information about NDIS eligibility and more is available at the national NDIS website: [www.ndis.gov.au](http://www.ndis.gov.au) or by calling the NDIA on **1800 800 110**.

